

## FUEL INJECTION PUMP HOUSING AND GOVERNOR

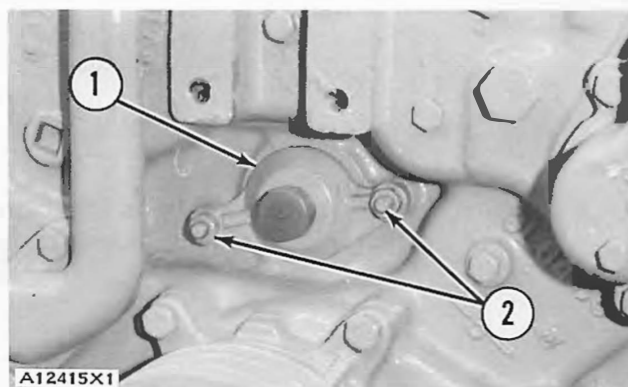
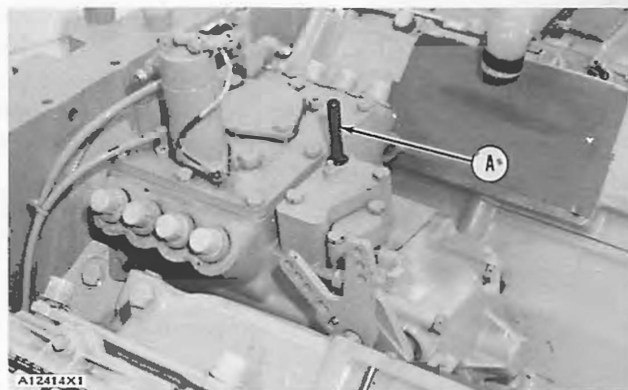
### REMOVE FUEL INJECTION PUMP HOUSING AND GOVERNOR 11-1286

Tools Needed		A	B
3P1544	Timing Pin	1	
<del>5P2071</del>	Plate <b>6V4069</b>		1
0S1616	Bolt 1/4"-20 NC x 1" long		2

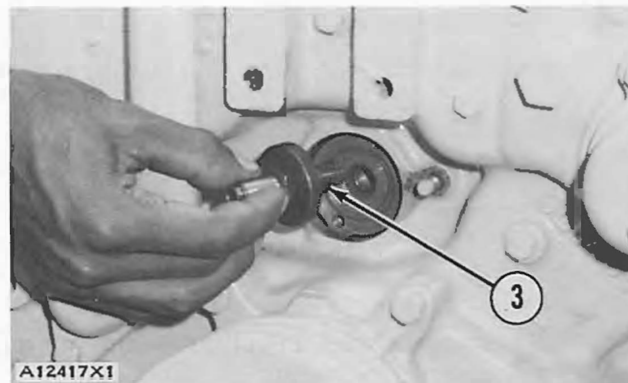
start by:

- a) remove air cleaner
- b) remove fuel injection lines
- c) Remove air inlet manifold

1. Remove plug from cover in fuel injection pump housing and install tool (A). Turn the crankshaft (clockwise) until the timing pin drops into the groove (slot) in the fuel injection pump camshaft.

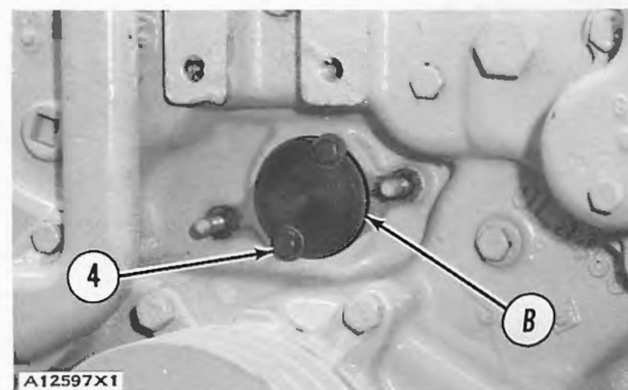


2. Remove two nuts (2) and the tachometer drive housing (1).



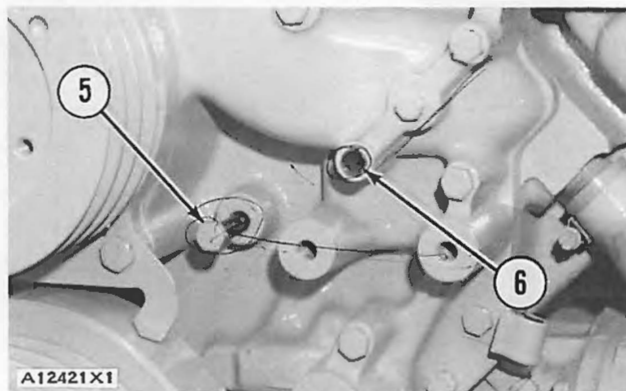
3. Remove the tachometer drive shaft (3).

4. Install tooling (B) into the camshaft drive gear for the fuel injection pump. Turn bolts (4) evenly until the drive gear is free of the shaft. Remove tooling (B).

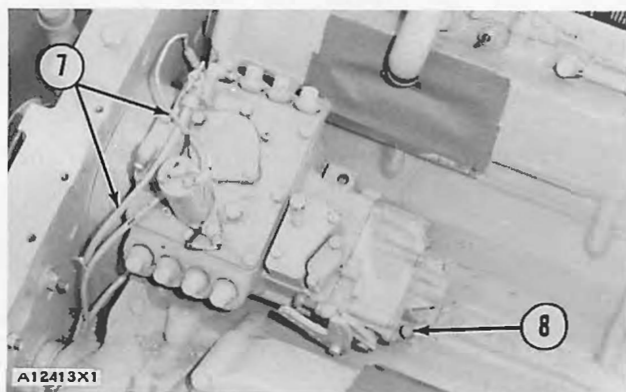


## FUEL INJECTION PUMP HOUSING AND GOVERNOR

5. Remove the plug from the timing hole in the front cover and install a 5/16"-18 NC bolt (5) 2 1/2 in. long. The cover bolt from hole (6) can be used. Turn the crankshaft (clockwise) until bolt can be installed into the timing gear and is in the center of the timing hole. The camshaft for the fuel injection pump is now in correct time to the engine.



6. Remove line (7). Remove bolts (8) from base of the fuel injection pump housing.



7. Remove the fuel injection pump housing and governor as a unit.



## FUEL INJECTION PUMP HOUSING AND GOVERNOR

### INSTALL FUEL INJECTION PUMP HOUSING AND GOVERNOR 12-1286

1. Put the fuel injection pump housing and governor in position on the engine. Install the bolts and lines.
2. Install the tachometer drive shaft and tighten it to a torque of  $80 \pm 5$  lb. ft. ( $108.5 \pm 6.8$  N·m).

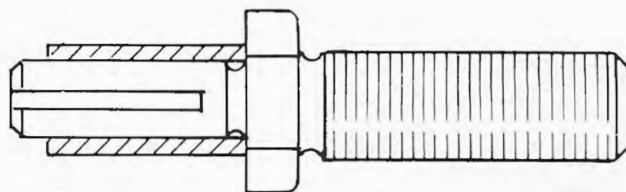
NOTE: Illustration A23394X1 shows earlier tachometer drive shaft that must be tightened to a torque of  $80 \pm 5$  lb. ft. ( $108.5 \pm 6.8$  N·m). Illustration A23857X1 shows a later tachometer drive shaft. When the engine is equipped with this type of drive shaft, tighten it to a torque of  $110 \pm 10$  lb. ft. ( $149.1 \pm 13.6$  N·m).

3. To check the timing, remove the timing pin and the bolt. Turn the crankshaft (clockwise) two revolutions and install the timing pin and bolt back in place. If the timing pin or bolt can not be installed, the fuel injection pump camshaft must be put into time again before doing Step 4.

4. Remove the bolt from the timing gear. Install the plug into the timing hole.
5. Remove the timing pin from the timing groove (slot) in the fuel injection pump camshaft.

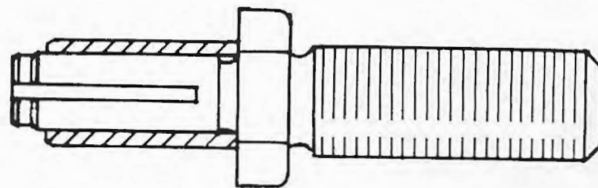
6. Install the tachometer drive housing, end by:

- a) install air inlet manifold
- b) install fuel injection lines
- c) install air cleaner



A23394X1

EARLIER TACHOMETER DRIVE SHAFT



A23857X1

LATER TACHOMETER DRIVE SHAFT